

MDX

1" x 1" Centrifugal Transportation Circulator

The MDX series pump is designed for precision fluid transfer in demanding operational environments. Utilizing a sealless, magnetically coupled drive, it ensures leak-free performance and minimal maintenance requirements. The unit supports flow rates up to 25 GPM (97 LPM) and can achieve a total dynamic head of 20 ft (6 m). Motor configurations include 12 VDC and 24 VDC brushless options for enhanced efficiency and extended service life.

Constructed with a corrosion-resistant aluminum housing and equipped with a 2.5-inch semi-open stainless steel impeller, the MDX pump is optimized for applications across agricultural, industrial, marine, OEM, and transportation sectors. Its integrated adjustable mounting base simplifies installation, while the weather-sealed motor enclosure provides protection in harsh environments. The pump is rated for ambient temperatures up to 200°F (93°C) and fluid temperatures up to 220°F (104°C), ensuring reliable operation under elevated thermal conditions.

SPECIFICATIONS:

Port Sizes	Flanged w/1" NPT Female Adpt.
Materials of Construction	Aluminum
Flow	Up to 25 GPM (5.7 m ³ /h)
Head Feet	Up to 20' (6 m)
Impeller	2.5" (63.5 mm) semi-open stainless steel
Drive Options	Close coupled 12V DC Close coupled 24V DC
Seal	Magnetically driven no mechanical seal required
Options	Adapters available to convert flanged connections to 1" female NPT, Optional mounting base is adjustable or removable
Temperature	Operation in ambient temperatures up to 200°F (93°C), Use with fluids to 220°F (104°C) and sustained fluid temps up to 210°F (99°C)
Base	(2) bolt integrated mounting foot cast into pump housing

Application:

- Agricultural
- Commercial
- Industrial
- Marine
- OEM
- Transportation

Features:

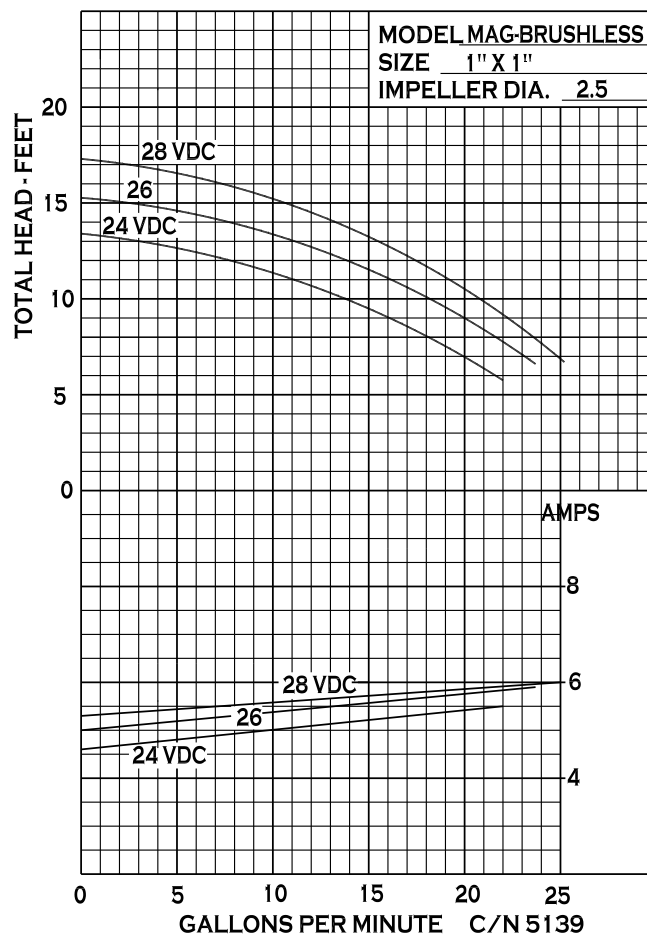
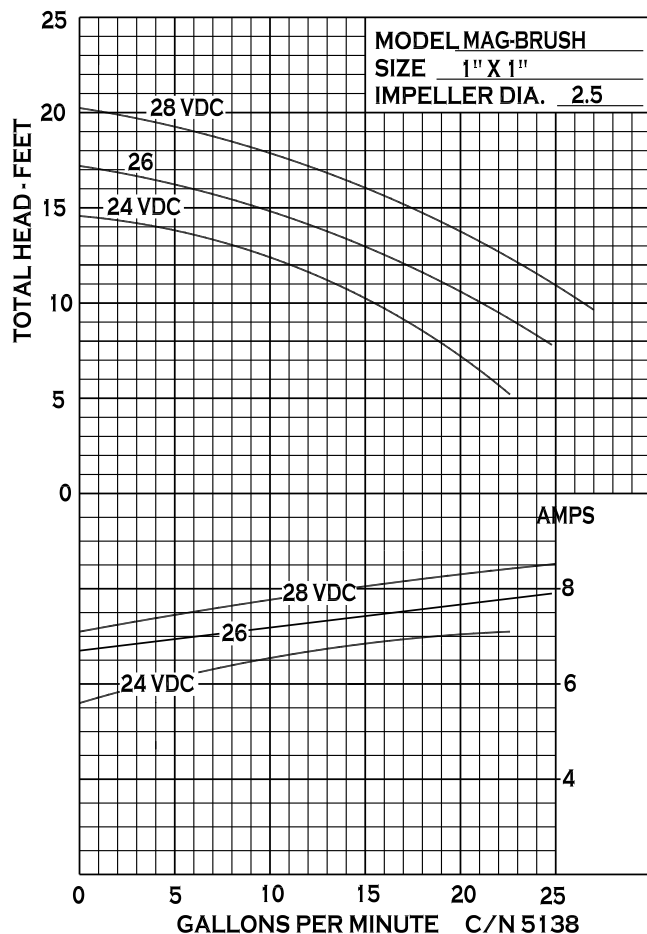
- Dual 18" long 14 AWG red (positive) black (negative) power leads
- Housing has 1" (4) bolt flanged suction & (2) bolt flanged discharge connections
- Motor has brushed or brushless configurations with sealed control electronics
- Thermally protected against overload and overtemp with automatic reset



An Ingersoll Rand Business

MDX

PERFORMANCE CURVES



12500 South Pulaski Road
Alsip, IL 60803, USA
Phone (800) 563-8006

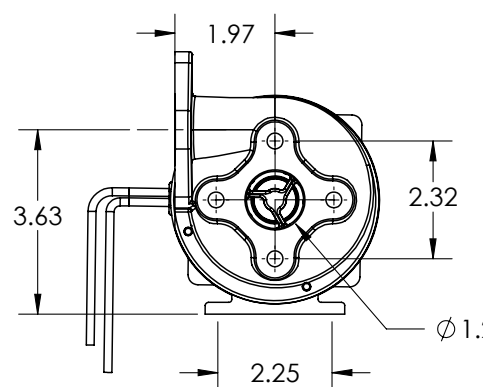
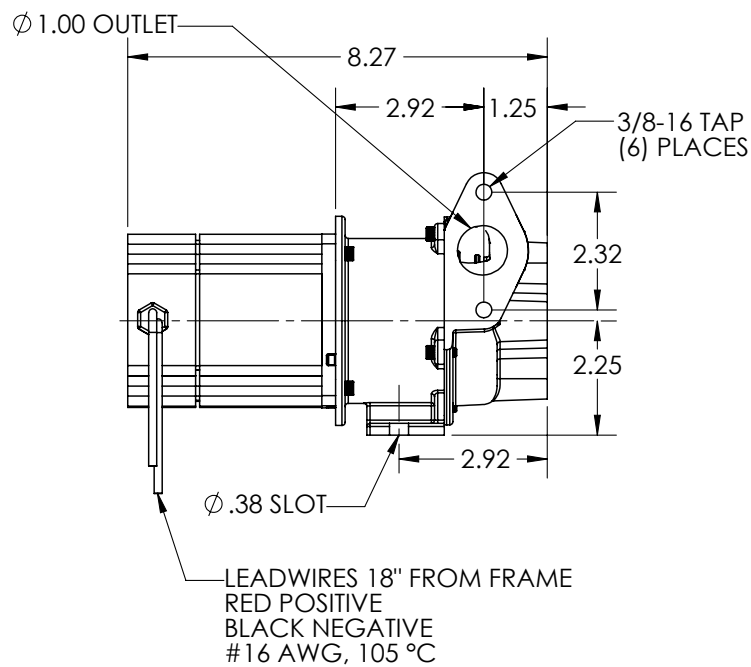


An Ingersoll Rand Business

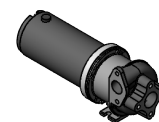
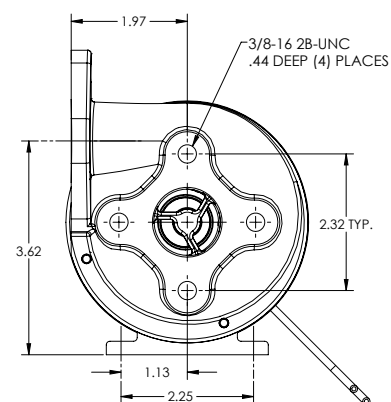
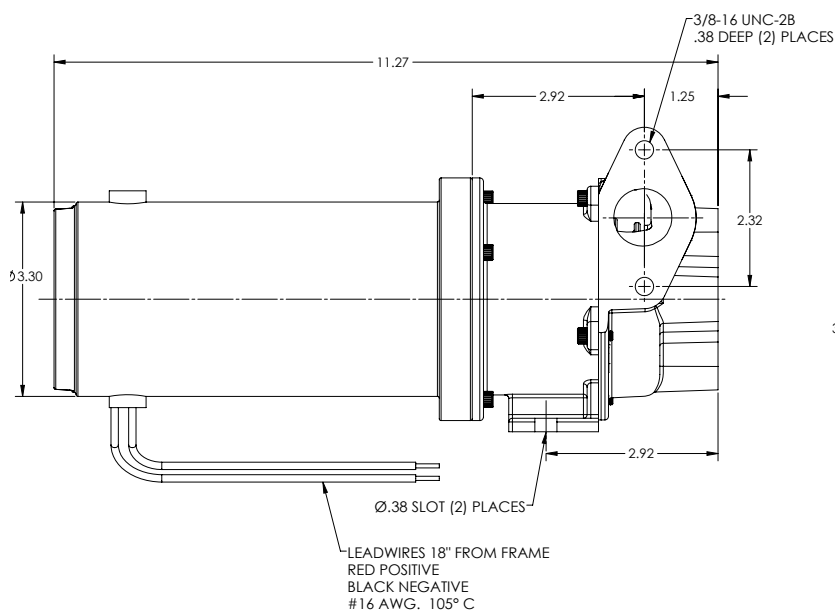
MDX

DIMENSIONS

MDX PUMP (MP30939) - MOTOR 24VDC



MDX PUMP (MP30011)



* For complete parts lists and troubleshooting guidance, please refer to the MP Pumps Installation Operation & Maintenance (IOM) Manual.



12500 South Pulaski Road
Alsip, IL 60803, USA
Phone (800) 563-8006